

Controllable Structured Meshing and Efficient Reduced Representation For Data Visualization

Guoning Chen

Assistant Professor

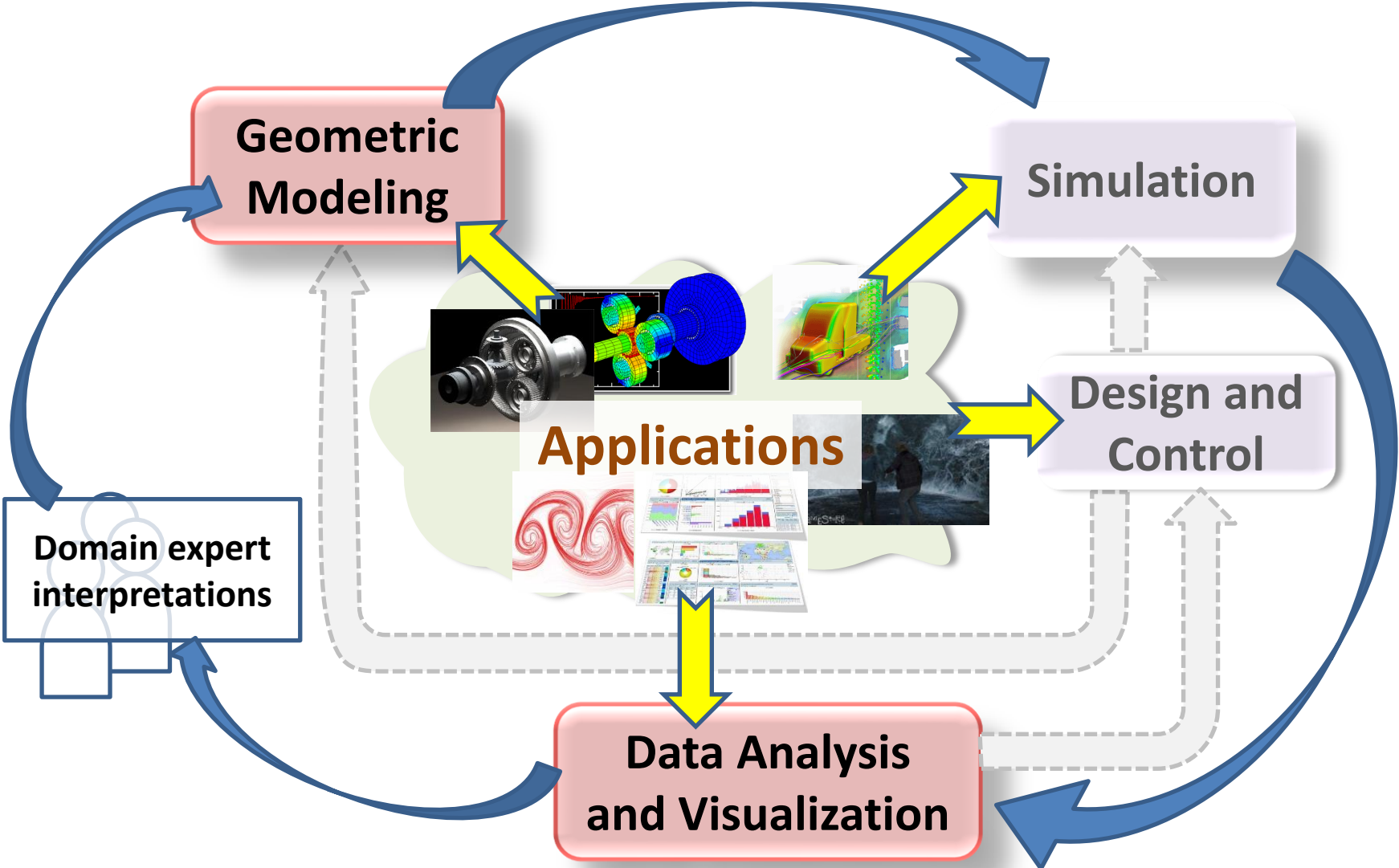
<http://www2.cs.uh.edu/~chengu>

chengu@cs.uh.edu

September 5, 2014



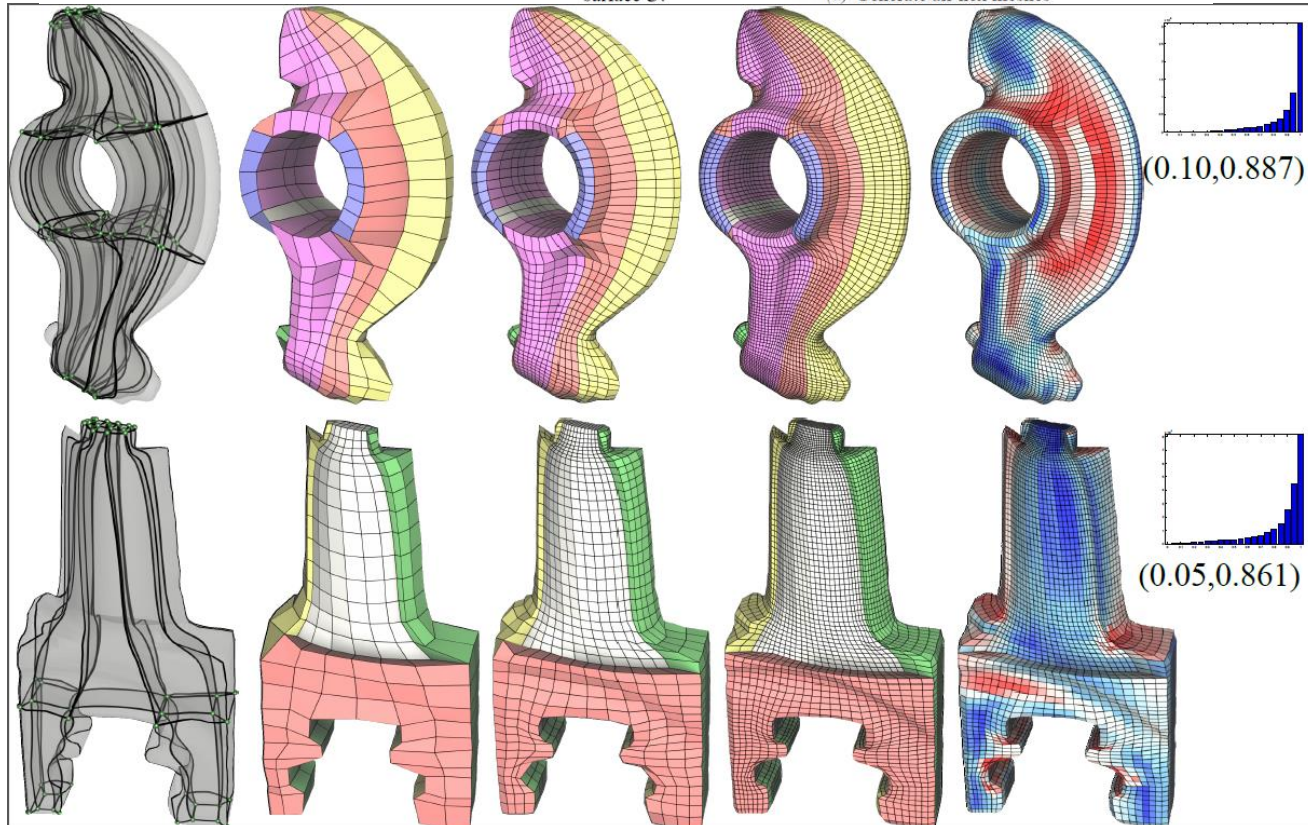
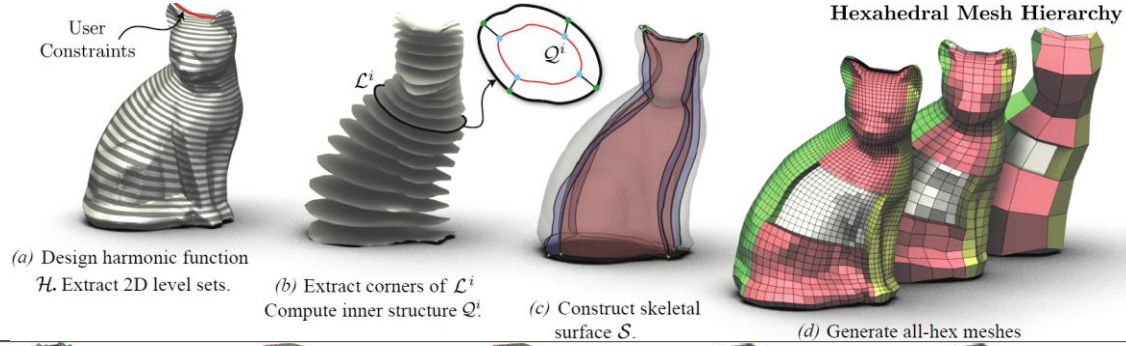
What are we doing?



Controllable Structured Meshing

Structured Volume Decomposition Via Generalized Sweeping

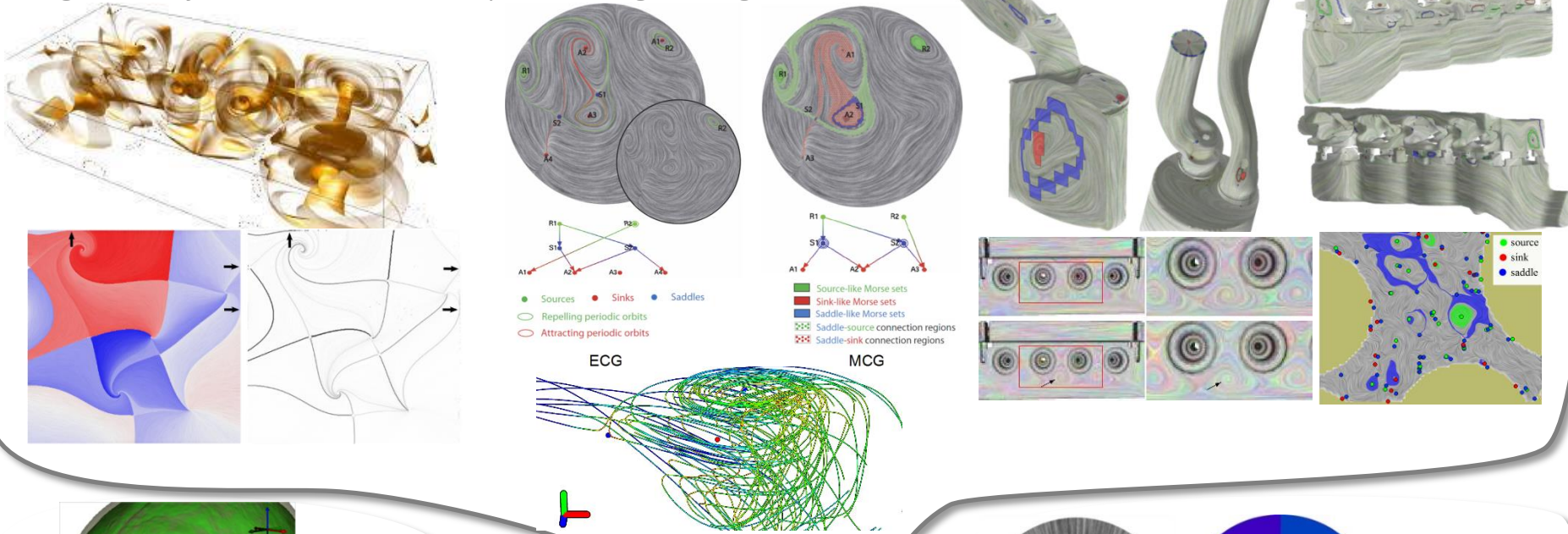
X. Gao, T. Martin, S. Deng, E. Cohen, Z. Deng, and, G. Chen.



Data Analysis and Visualization

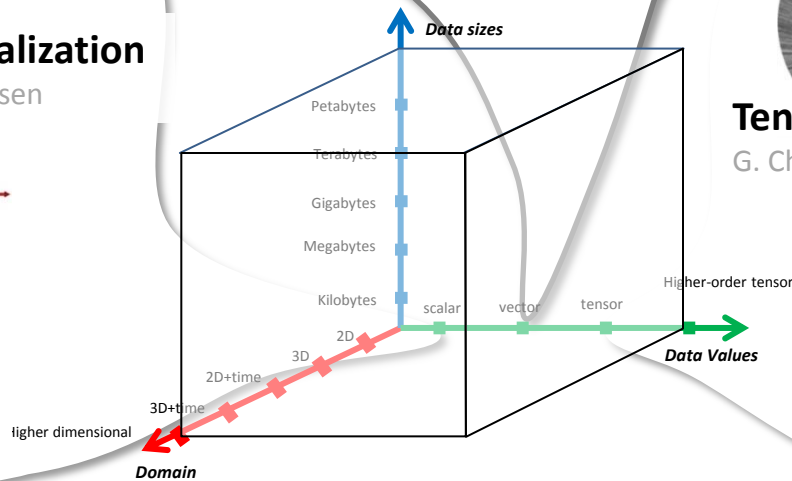
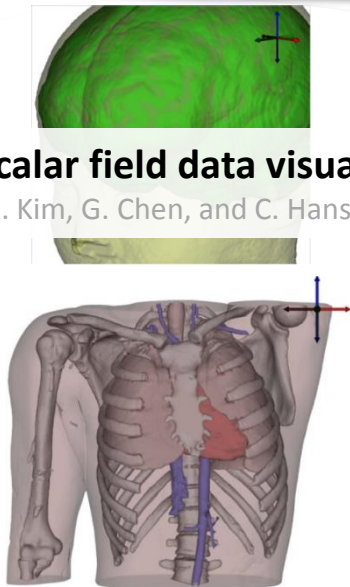
Vector field analysis and visualization

L. Zhang, M. Berenkoub, R. Laramée, D. Thompson, E. Zhang, B. Wang, and G. Chen



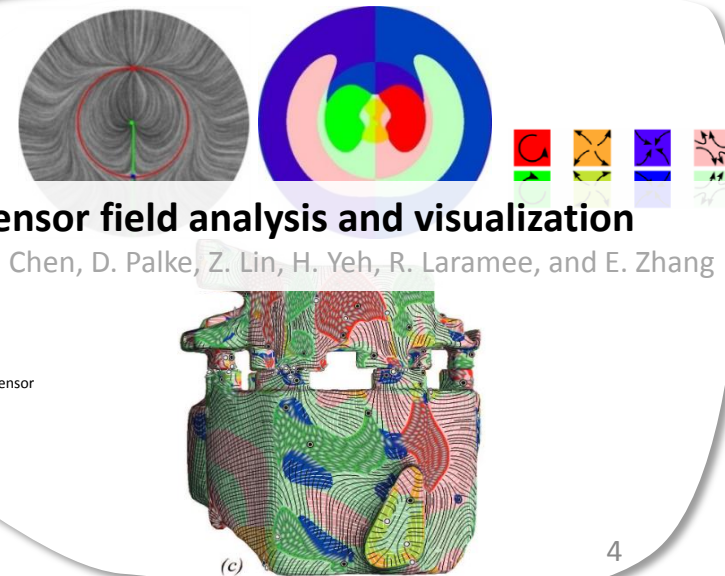
Scalar field data visualization

M. Kim, G. Chen, and C. Hansen



Tensor field analysis and visualization

G. Chen, D. Palke, Z. Lin, H. Yeh, R. Laramée, and E. Zhang

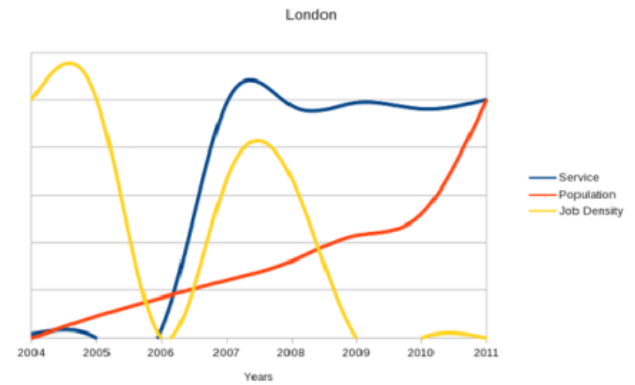
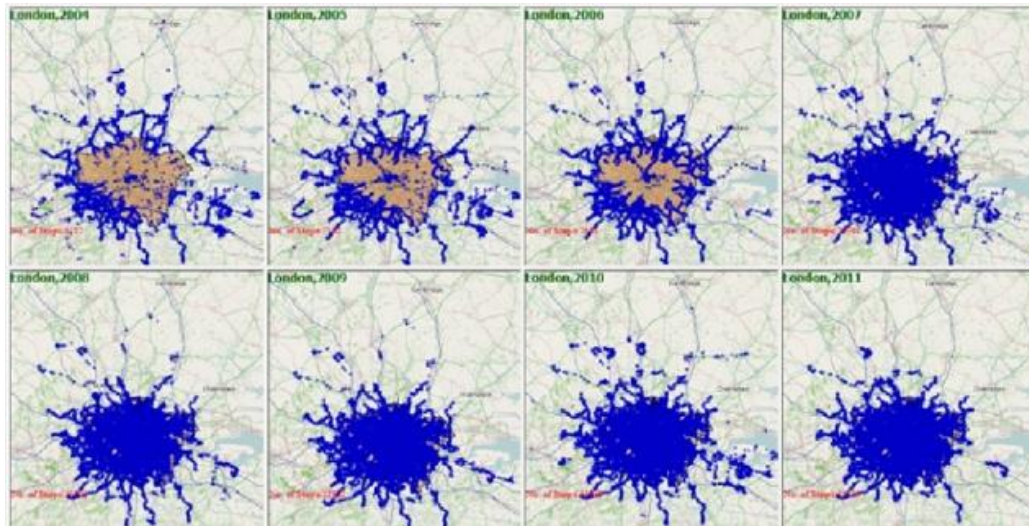
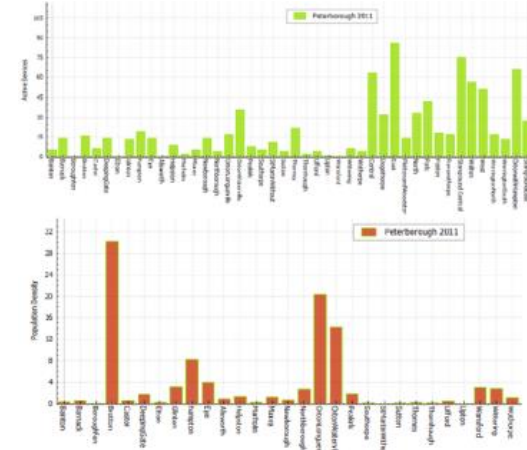
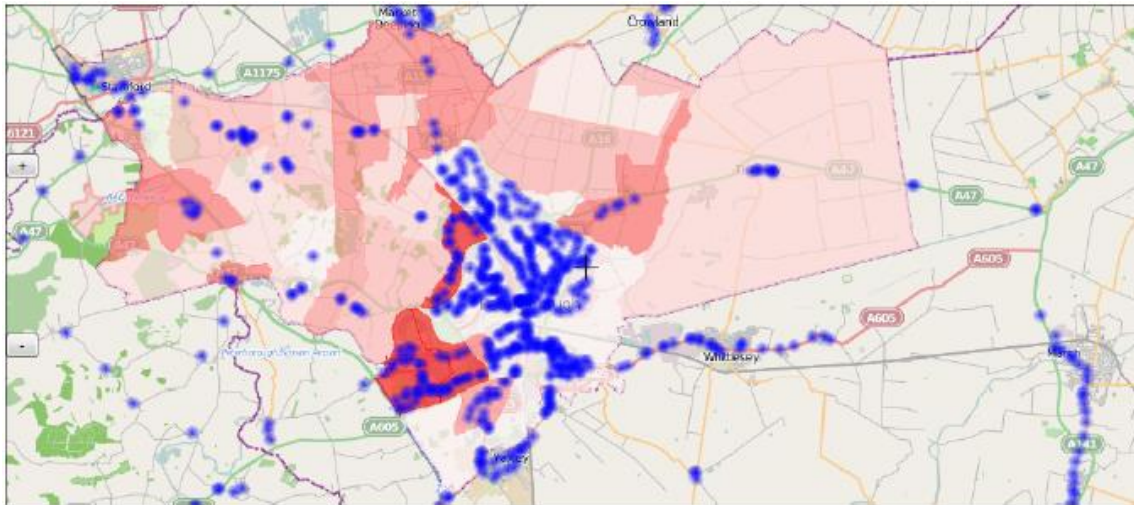


Data Analysis and Visualization

Data Visual Analytic of Public Transportation

M. Berenjkoub, Harsha, Z. Deng, and G.Chen

Wang, and G. Chen



Acknowledgment

- Lab members

- Current

- Xifeng Gao, Lei Zhang, Marzieh Berenjkoub, Kaoji Xu, Lieyu Shi

- Alumni

- Shuyu Xu, Wei Cao

- Collaborators

- Wei Chen, Elaine Cohen, Charles Hansen, Thomas Holtt, Jin Huang, Robert Laramée, James Liburdy, Tobias Martin, Valerio Pascucci, Paul Rosen, Allen Sanderson, Adrian Sescu, Gerek Scheuermann, Primoz Skraba, Andrzej Szymczak, David Thompson, Bei Wang, Harry Yeh

